

Environmental Insight



Stormwater Pollution Prevention

Have you ever wondered what you can do to help protect the rivers, streams, and waterways near your home? In addition to serving as our drinking water supplies, these water bodies also provide us with various recreational activities and beautiful scenery.

Stormwater runoff results when rain cannot soak into the ground because of impervious surfaces such as roads and rooftops. Stormwater pollution results when stormwater picks up, carries, and discharges various pollutants into storm drains or ditches, and ultimately into the downstream waterways. Pollutants include items such as pesticides, fertilizers, construction site sediments, pet waste, litter, and other items.

Prevention of stormwater pollution is important to:

- Prevent contamination of drinking water sources
- Protect our precious water resources for recreational activities such as fishing, swimming, and boating
- Protect plant and animal habitats
- Preserve the natural beauty of our landscape

Common sources of pollution in the stormwater runoff from our lawns include pet waste, fertilizers, pesticides, lawn clippings and leaves, and other substances which may be left uncovered (such as dirt piles, salt piles, paints, oils, etc.). In addition, car maintenance activities such as oil changes and car washing can contribute to stormwater pollution when oil and detergent run into the gutter. Remember to collect all used oil and dispose of it properly. When washing a car, it's better to wash on grass, which filters the contaminants, or to use a commercial car wash. Be sure to throw garbage, including cigarette butts into the trash to prevent garbage from entering Puget Sound. Be sure to report spills in accordance with your installations spill response procedures.



NSE Environmental Staff

Environmental Office: (425) 304-3470

Program	Name	Email	Phone
Spills	Craig Henshaw	craig.henshaw@navy.mil	(425) 304-3465
Natural Resources	Alicia Higgs	alicia.higgs@navy.mil	(425) 304-3464
Stormwater, Wastewater, & UST/AST	Holli Lamb	holli.k.lamb@navy.mil	(425) 304-3277
Air & Drinking Water	Andrew Lee	andrew.t.lee1@navy.mil	(425) 304-3466
Recycling	Denise Lesniak	denise.lesniak@navy.mil	(425) 304-3071
Hazardous Waste	Arnel Reyes	arnel.reyes@navy.mil	(425) 304-5987

Multi Sector General Permit (MSGP)

The new MSGP became effective March 1, 2021. It requires additional quarterly analysis and focuses on Best Management Practices. Please do your part to ensure compliance.

In accordance with the MSGP, the Facility Inspection for the first quarter was conducted in March. These pictures are from Pier B. Any trash such as plastic, cardboard and foam will end up in the storm system if left upon the concrete surfaces of Piers A and B or the South Wharf. Outfall A receives stormwater runoff from piers A and B as well as the South Wharf.



Outfall A

Key Best Management Practices you can do include:

- Please ensure metal items are properly covered and that there is a plan to remove the items from the pier.
- Please ensure general housekeeping is maintained to prevent trash and debris from entering the storm drain.

If you need assistance or to deliver large items for recycling (at building 2331), please contact the Recycling Office at 304-3071 to make arrangements.



Upcoming Events

Event	Date	Location	Notes
EWCCs will be contacted to conduct the training in small groups.	TBD	TBD	POC: David Warburton (david.warburton@navy.mil)

Environmental Management Systems

Naval Station Everett’s (NSE) Environmental Management Systems (EMS) is a required program that broadens environmental responsibilities beyond Environmental Division staff through various training, tabletop exercises, and public outreach and education. All personnel who work on NSE have an impact on the environment. We appoint and thoroughly train Environmental Work Center Coordinators (EWCCs) in each work center, and EWCCs in turn train their work center personnel. In addition, NSE Environmental Division provides a robust training program throughout the base to include job-related specific environmental training:

- Command duty officer (CDO) training
- EMS Awareness training
- Contractor training
- Persons-In-Charge training for oil and fuel transfers
- Spill Prevention, Control, and Countermeasures (SPCC) training for Oil Handlers

All training is conducted, tracked and recorded by Environmental Division Media Managers, and all records are maintained within the EMS Program. Training is a crucial part of our Environmental Management System’s process of continual improvement to address NSE environmental impacts, improve environmental compliance, reduce costs, and sustain mission readiness.

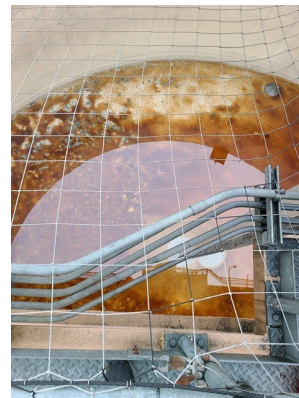
All personnel working on NSE must complete EMS Awareness training one time, including contractors. Questions regarding the program can be directed to Dave Warburton at david.warburton@navy.mil.

Contaminated Wastewater Issue

Approximately 6 weeks ago, the oily waste system facility on base received contaminated industrial wastewater. The substance does not separate from water and cannot be discharged to the City of Everett. The picture of the small container shows the milkshake-like color of this substance with oil floating on top.



The second picture shows the contaminant



inside the load equalization tank (LET) where attempts to pull out the substance with the belt (third picture) led to contaminating the oil tanks with too much water and unknown substance. Normally the oil pulled from

the LETs is collected into the oil tanks and then recycled. The estimated cost to pay for the removal and offsite treatment of the water from the LET and oil tanks is expected to be \$40,000. Please do not dispose of any other substances other than oily waste into a bilge. If you have waste that you need to dispose of contact HAZWASTE for proper disposal.



Recycling

Trash Talk



Naval Station Everett's Integrate Solid Waste (ISW) Program oversees the refuse and recycling for Naval Station Everett, Smokey Point Support Complex, Radio Station Jim Creek and the Resort & Conference Center at Pacific Beach. This team collects and empties all the green dumpsters you see on base. Each dumpster is weighed and these refuse weights are tracked to each building. Some of our customers directly pay for their refuse each month. Collections are based on the number of people in the command who will be using the dumpsters and the estimated volume for their use.

NAVSTA EVERETT INST 5560.1F states, "Transporting refuse from off-base for disposal within on-base dumpsters is prohibited. To do so constitutes a theft of government services and is a chargeable offense. On-base dumpsters are for official use only and shall not be used for disposal of personal refuse."

Lately, we have been seeing a lot of illegal dumping. This happens when our military, civilians or authorized base users bring their personal trash from home and put it into a dumpster on base. This affects our customers when they dispose of refuse and find their container is already full. Thus, creating additional disposal costs to the government, using more labor hours to empty containers as well as alter our diversion rate metrics.

Quick Reminder: all trash should be bagged and placed into your Command's green dumpster. Ensure that all container lids are closed. Recycling should be placed into the appropriate bins and remember to bag all shredded paper and place this in your recycle bins as well. Rope, furniture, metal and any other large or bulky items should not be placed into the dumpster. These types of items possess a safety concern to the ISW Program team handling the materials and can damage our equipment. If large and heavy items are placed into the dumpster, this could cause damage to the truck which uses a mechanically compacted function that allows more efficient collections. Repairs costs are extremely high and lengthy for this type of truck. Please help us keep everyone safe and our equipment operational.

Here are a few tips regarding your recycle bins:

Recyclables should be **E**mpy, **C**lean & **D**ry

Bag all shredded paper

Place the correct items into the bin (adding something you think may be recycled is not helpful to our sorting process). Stick to what is listed on the bin.

Contact NSE's Integrated Solid Waste Program at (425)304-3071 with questions on refuse disposal, to schedule an extra pick up and how to improve your recycling.